

## Certificate of Analysis

### LudgerPure™ APTS Labeled NA2 Glycan

Cat. #: CAPTS-NA2-01

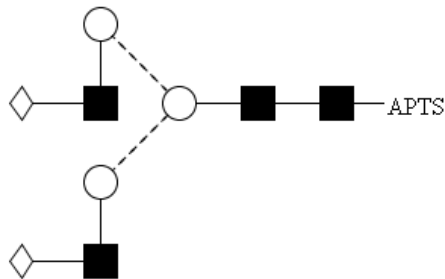
Batch: B286-02

Size: ~ 20 pmol

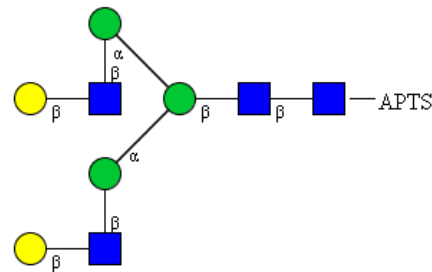
#### Alternative Names

A2G2

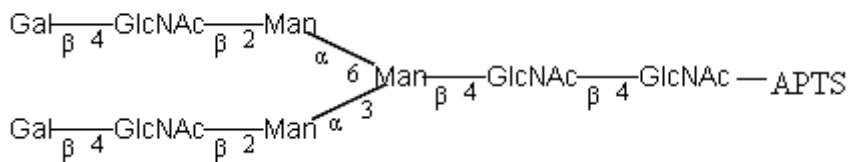
#### Structure



Oxford Notation



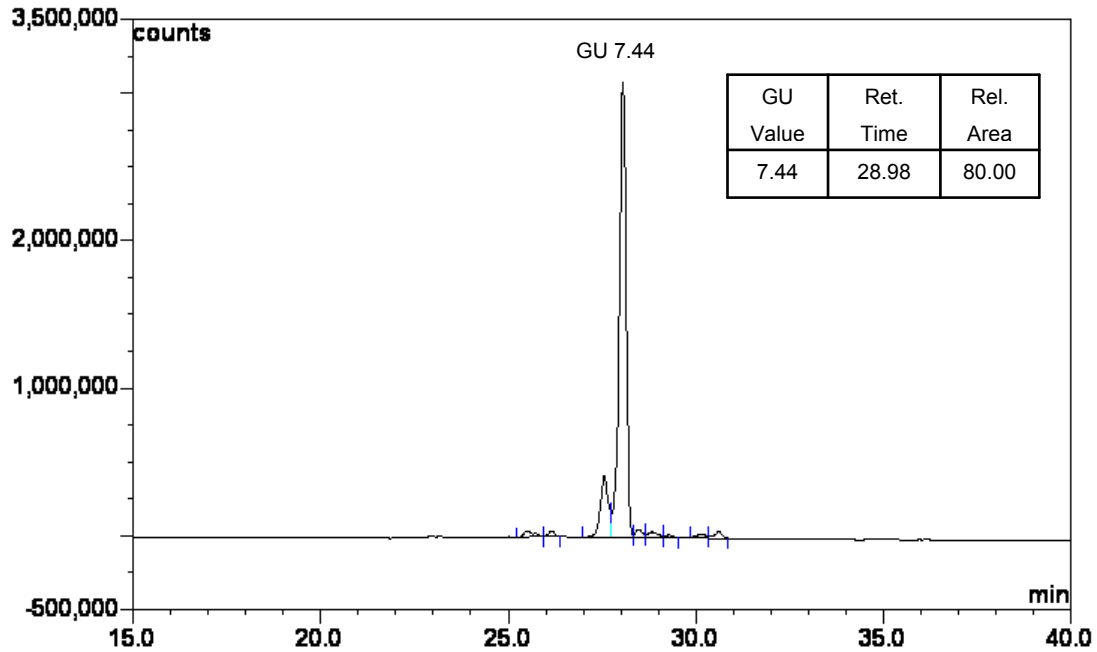
CFG Notation



Text Notation

{The Oxford Notation glycan structure is drawn according to the scheme developed by Oxford-Dublin Glycobiology Laboratory (see Figure 2)}.

**Purity:** > 80 % APTS labelled NA2 glycan, as assessed by uHPLC - see Figure1.



**Figure 1: BEH UPLC profile of APTS Labeled NA2 Glycan (Cat. #: CAPTS-NA2-01, Batch # B286-02).**

*NA2 glycan structure identified by uHPLC. (GU value obtained from running internal GHP labelled with APTS).*

The APTS labelled NA2 glycan peak (figure 1) eluted at 28.98 minutes under the following uHPLC conditions:

Column: Waters BEH uHPLC column, 1.7  $\mu$ M

Flow: 0.5 ml/min

Temperature: 60 °C

Solvent A: 50 mM Ammonium formate pH 4.4

Solvent B: 100 % Acetonitrile

Gradient: 0 min - 78 % B

38.5 min – 55.9 % B

40.5 min - 0 % B

42.5 min - 0 % B

44.5 min - 78 % B

55 min - 78 % B

Detector: Ultimate 3000

Excitation wavelength: 448 nm

Emission wavelength: 510 nm

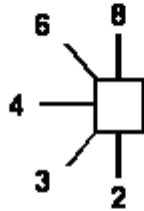
*Symbol for sugar*

- Glc
- GlcNAc
- ★ NeuNAc
- ◇ Gal
- ◆ GalNAc
- ◊ Fuc (deoxy galactose)
- Man
- △ Xylose

*Fluorescent label*

—APTS 8-Aminopyrene-1,3,6-trisulfonic acid

*Linkage position*



*Linkage type*

- β-linkage
- ..... α-linkage
- ~ unknown β-linkage
- ~ unknown α-linkage

Figure 2: GlycoBase glycan structure key.